



# **Climate Change Adaptation and Urban Resilience**

## **Study Trip in South Korea**

# **Report**



# Table of Contents

<b>Executive Summary .....</b>	<b>1</b>
<b>Participants List .....</b>	<b>2</b>
<b>Collaborative organizations' list .....</b>	<b>3</b>
<b>Overall Program of the Study Trip .....</b>	<b>4</b>
<b>Detailed Content.....</b>	<b>5</b>
<b>October 13 (Mon).....</b>	<b>5</b>
ICLEI East Asia Secretariat.....	5
<b>October 14 (Tue).....</b>	<b>6</b>
Seoul Metropolitan Government (SMG) & Citizens' Committee for Green Seoul.....	6
Exchange Session between KEI and MEE China .....	7
<b>October 15 (Wed) .....</b>	<b>9</b>
Suwon Special City's Sustainability.....	9
Haenggung-dong Eco Mobility Village .....	10
<b>October 16 (Thu) .....</b>	<b>11</b>
Nowon EZ Center .....	11
Gongneung Youth Cultural Information Center .....	12
Lotte World Tower .....	13
<b>October 17 (Fri) .....</b>	<b>14</b>
Cheonggyecheon Walking Tour .....	14
<b>Evaluation Survey Result .....</b>	<b>15</b>
<b>Communications .....</b>	<b>17</b>
<b>References.....</b>	<b>20</b>



## Executive Summary

ICLEI East Asia Secretariat, in collaboration with the Environmental Development Center, Ministry of Ecology and Environment (MEE) of China, organized a **study trip on Climate Change Adaptation and Urban Resilience to South Korea** on October 13-17, 2025.

Supported by Partnerships for Community Development (PCD), this initiative was designed as a platform for cross-border knowledge exchange.

### Program Overview and Participation

A delegation of 12 participants from various Chinese organizations, including the Environmental Development Center, Ministry of Ecology and Environment of China, Xiong'an New area in Hebei Province, Changzhi City, Lishui City, PCD, Friends of Nature Environmental Research Institute, and the China Blue Sustainability Institute, visited Seoul Metropolitan City and Suwon Special City.

The structured program featured:

- **8 site visits:** ICLEI East Asia Secretariat, Seoul Metropolitan City Hall, Suwon Hwaseong Museum, Haenggung-dong Eco Mobility Village, Nowon EZ Center, Gongneung Youth Cultural Information Center, Lotte Tower, and Cheonggyecheon Stream
- **Meetings with 10 Key organizations:** ICLEI East Asia Secretariat, Seoul Metropolitan Government's Climate and Environmental Policy Division, the Citizens' Committee for Green Seoul, Korean Environment Institute (KEI), Suwon Special City's Environmental Policy Division, Suwon Council for Sustainable Development (Suwon CSD), ICLEI Korea Office, Nowon Environment Foundation, Gongneung Youth Cultural Information Center, and the Seoul Tourism Organization.

### Key Learning Outcomes

Through these engagements, participants gained insights into Korea's innovative strategies for climate adaptation and sustainable urban development. The program successfully facilitated learning on:

- Climate adaptation and urban resilience actions from different governance levels
- Citizen engagement in local governments' climate action.

### Conclusion

Overall, the participants expressed high satisfaction with the study trip's comprehensive content. They conveyed a strong interest in conducting a more in-depth study in 2026 to strengthen collaboration between Korean and Chinese stakeholders in urban sustainability efforts.



## Participants List

	Name	Organization	Position	Region
1	Xu, Cheng	Environmental Development Center, Ministry of Ecology and Environment of China	Director	Beijing
2	Di, Huiping	Environmental Development Center, Ministry of Ecology and Environment of China	Senior Engineer	Beijing
3	Li, Mengya	Environmental Development Center, Ministry of Ecology and Environment of China	Assistant Engineer	Beijing
4	Hao, Najia	Environmental Development Center, Ministry of Ecology and Environment of China	Engineer	Beijing
5	Guo, Kai	Bureau of Ecology and Environment of Xiong'an New Area, Hebei Province	Director	Hebei Province
6	Liu, Jia	Bureau of Ecology and Environment of Xiong'an New Area, Hebei Province	Deputy Director	Hebei Province
7	Shi, Yuehong	Changzhi Municipal Bureau of Ecology and Environment, Shanxi Province	Director General	Changzi
8	Du, Xiaobin	Lishui Municipal Bureau of Ecology and Environment, Zhejiang Province	Director	Lishui
9	He, Yini	Friends of Nature Environmental Research Institute	Director General	Beijing
10	Qiao, Feng	China Blue Sustainability Institute	Director	Hainan
11	Yuan, Yinghua	Partnerships for Community Development	Deputy Chief Representative	Beijing
12	Song, Yanbo	Partnerships for Community Development	Assistant Project Manager	Beijing



## Collaborative organizations' list

	Organization & Division	Category	Website
1	ICLEI East Asia Secretariat	International CSO	<a href="https://eastasia.iclei.org/">https://eastasia.iclei.org/</a>
2	Climate and Environmental Policy Division of SMG	Local government	<a href="https://english.seoul.go.kr/policy/environment-energy/seouls-environment/">https://english.seoul.go.kr/policy/environment-energy/seouls-environment/</a>
3	Citizen's Committee for Green Seoul	Government - CSO cooperative governance	<a href="https://cafe.naver.com/ecoseoulpeople">https://cafe.naver.com/ecoseoulpeople</a> (Kor)
4	Korean Environment Institute (KEI)	Government-funded research institute	<a href="https://www.kei.re.kr/eng/#allgnb">https://www.kei.re.kr/eng/#allgnb</a>
7	Environmental Policy Division of Suwon Special City Government	Local government	<a href="https://www.suwon.go.kr/index.do">https://www.suwon.go.kr/index.do</a> (Kor)
8	Suwon Council for Sustainable Development	Government - CSO cooperative governance	<a href="http://suwonagenda21.or.kr">suwonagenda21.or.kr</a> (Kor)
9	Haenggung-dong Eco-mobility Village (Guiding by ICLEI Korea)	Local government	<a href="https://sustainablemobility.iclei.org/ecomobility-alliance/suwon-rep-of-korea/">https://sustainablemobility.iclei.org/ecomobility-alliance/suwon-rep-of-korea/</a>
10	ICLEI Korea Office	International CSO	<a href="https://www.icleikorea.org/">https://www.icleikorea.org/</a>
11	Nowon Environment Foundation	Government - CSO cooperative governance	<a href="https://nwgreen.or.kr/EN/">https://nwgreen.or.kr/EN/</a>
12	Gongneung Youth Cultural Information Center	Local government	<a href="http://gycenter.or.kr/">http://gycenter.or.kr/</a> (Kor)
13	Seoul Tourism Organization	Local government-funded organization	<a href="https://www.sto.or.kr/english/index">https://www.sto.or.kr/english/index</a>

## Overall Program of the Study Trip

Interpretations between Korean and Chinese were provided

Day	Time	Venue	Content
10.13 Mon	15:20-16:30	Seoul Global Center	<b>Study Trip orientation &amp; ICLEI East Asia introduction</b> <ul style="list-style-type: none"> <li>• Introduction &amp; Welcoming speech</li> <li>• Study trip orientation</li> <li>• Introduction to ICLEI East Asia Secretariat activities</li> </ul>
10.14 Tue	10:00-12:00	Seoul City Hall Seosomun Complex	<b>Seoul Metropolitan Government &amp; Citizens' Committee for Green Seoul</b> <ul style="list-style-type: none"> <li>• Presentation on governance and climate change adaptation work by the Citizen's Committee for Green Seoul</li> <li>• Discussion on governance and citizen engagement on climate change</li> </ul>
	15:00-17:30	Yongsan Station ITX 3 Meeting Room	<b>Exchange session between KEI &amp; MEE China</b> <ul style="list-style-type: none"> <li>• Korea's climate change adaptation and resilience policies</li> <li>• China's cases of enhancing climate change adaptation and resilience</li> <li>• Exploring opportunities for cooperation</li> </ul>
10.15 Wed	10:00-11:30	Suwon Hwaseong Museum	<b>Suwon Special City's sustainability</b> <ul style="list-style-type: none"> <li>• Presentation on Community-led Sustainable Development: the Suwon Model by Suwon Council for Sustainable Development</li> </ul>
	13:00-15:30	Haenggung-dong Eco-Mobility Village	<b>Site visit to the Haenggung-dong Eco Mobility Village</b>
10.16 Thu	10:00-12:00	Nowon EZ Center	<b>Site visit to Nowon EZ Center for building energy efficiency</b>
	13:40-15:30	Gongneung Youth Cultural Information Center	<b>Site visit to Gongneung Youth Cultural Information Center</b> <ul style="list-style-type: none"> <li>• Center's establishment and operation</li> <li>• Artificial green space under a solar panel on the roof</li> </ul>
	16:30-17:30	Lotte Tower	<b>Site visit to Lotte World Tower</b>
10.17 Fri	10:00-11:00	Cheonggye-Cheon	<b>Site visit to Cheonggyecheon Stream</b>
	11:30-12:30	Seoul Global Center	<b>Closing</b> , lunch and free departure



## Detailed Content

October 13 (Mon)

15:20-16:30

### ICLEI East Asia Secretariat

- **Venue:** Room 402, 4th floor of the Seoul Global Center
- **Features**
  - ICLEI East Asia Secretariat, based in Seoul, supports 117 member local governments across Korea, Japan, China, Mongolia, and Uzbekistan.
  - The secretariat focuses on climate action, carbon neutrality, resilience, and fostering collaboration among East Asian cities to accelerate sustainable urban development.
- **Key Topics**
  - Introduction to ICLEI East Asia Secretariat
  - Introduction to the itinerary of the study trip
  - Discussion on possible collaboration and Q&A Session
- **Presenters & Facilitators**
  - Presenter: **Mr. Shu Zhu**, Regional Director;
  - Ms. Ge Liu, Strategy Manager;
  - Ms. Siqiao Yuan, Program Manager;
  - Ms. Xiaoqian Zhou, Communication Officer;
  - Ms. Yeajin Han, Program Consultant; and
  - Ms. Yeonah Ku, Program Officer from ICLEI East Asia Secretariat.
- **Photos**



October 14 (Tue)

10:00-12:00

### Seoul Metropolitan Government (SMG) & Citizens' Committee for Green Seoul

- **Venue:** Smart Meeting Room, 20th floor, Seoul City Hall Seosomun Complex
- **Features**
  - The Citizens' Committee for Green Seoul was established in 1995 via municipal ordinance, influenced by the 1992 United Nations Conference on Environment and Development (UNCED), which introduced Local Agenda 21, as well as Korea's shift toward local autonomy and civic activism.
  - The committee is co-chaired by three representatives from civil society, business, and public administration. Membership includes diverse stakeholders from academia, civic groups, business, and public officials. The Climate and Environmental Policy Division's Governance Practice Team at SMG acts as the coordinating team.
- **Key Topics**
  - The committee drives environmental policy development, execution, and monitoring through five subcommittees: Climate & Air, Ecology, Resource Circulation, Environmental Education, and Environmental Health.
  - Policy Governance: Engaging in the planning, execution, and evaluation monitoring of Seoul's environmental policies.
  - Advisory Role: Reviewing the formulation of environmental conservation plans and the designation of ecological landscape protection areas.
  - Public Platform: Serving as a formal channel for collecting and consolidating public opinions on environmental issues.
  - Promoting Civic Participation: Developing strategies to expand civic participation in environmental initiatives across the city.
- **Q&A**
  - Governance and Conflict Resolution: While initial conflicts arose (e.g., a golf course dispute), the current system resolves different opinions through dialogue. Citizens' demands are documented and delivered through forums and civil society channels; sometimes individual petitions are submitted directly.
  - Challenges in Committee: Committee's independence and achieving greater policy reflection of citizen expertise are major challenges which currently remain limited. Although citizen's expertise is recognized, its actual policy reflection remains limited.
  - Financial Model: The committee is fully funded by the SMG. Project funding for civic groups is based on a proposal and competitive selection process managed by the SMG.





- **Presenters & Facilitators**

- ❑ Presenter: **Mr. Seunghan Lee**, Officer;
- ❑ Ms. Minhee Joo, Team Manager;
- Ms. Heeseon Shim, Officer;
- Ms. Jihoon Jang, Officer; and
- Ms. Kyeonghyun Cho, Officer from Climate and Environmental Policy Division
- Mr. Lut Kim, Officer; and
- Ms. Seunguk Han, Officer from Citizens' Committee for Green Seoul

- **Photos**



15:00-17:30

### Exchange Session between KEI and MEE China

- **Venue:** Yongsan station, ITX 4
- **Features**
  - ❑ Korean Environment Institute (KEI), established in 1992, is Korea's environmental think tank. It is incorporated under the Office for Government Policy Coordination as a government-funded research institute working closely with the Ministry of Climate, Energy, and Environment (MCEE).
  - ❑ KEI aims to contribute to the prevention and resolution of environmental challenges through environmental policy research and the professional, fair review of environmental impact assessments.
- **Key Topics**
- **Korea's Adaptation Efforts** by Dr. Juyoun Kang
  - ❑ Integrated Legal and Planning Foundation: Korea's adaptation efforts are primarily governed by the Framework Act on Carbon Neutrality and Green Growth (2021) and the subsequent National Adaptation Plan. These instruments mandate the systematic, science-based approach to climate adaptation.
  - ❑ Mandated Sub-national Implementation: The national framework legally requires all 17 metropolitan cities/provinces and 226 local governments to establish and actively implement their own adaptation plans.

- **Activating Regional Adaptation through Korea's Vulnerable Area and Population Support Programs** by Dr. Taehyoung Kim
  - Integrated Multi-Sectoral Governance and Legal Basis: Korea's legal framework for climate adaptation features a collaborative implementation structure where the MCEE (planning/oversight), Local Governments (execution), and KEI (analysis/consulting) share roles. This approach extends to vulnerable population support by linking with various ministries to deliver comprehensive support packages like energy vouchers and safety assistance.
  - Localized Physical Adaptation and Funding Mechanism: The program prioritizes the construction of practical, localized physical adaptation infrastructure directly addressing regional climate vulnerability.
- **Carbon-neutral Cities in the Republic of Korea** by Dr. Jiyeon Song
  - Evolution of Legal and Strategic Foundation: Korea's urban environmental focus has shifted from "low-carbon/green cities" toward "clean energy and carbon neutrality." This transition is legally underpinned by the Framework Act on Carbon Neutrality and Green Growth (2021) and the 1st National Plan (2023) for achieving the 2050 carbon neutrality goal.
  - Integrated Localized Carbon Neutrality City Projects: Carbon Neutral Cities are developed to reflect local characteristics, exemplified by Suwon Special City and Cheongju. Key project components include Energy Transition, Resource Circulation, and Climate Adaptation.
- **China's Climate Adaptation Strategy and Pilot Program** by Xu Cheng
  - National Climate Change Adaptation Strategy: China's adaptation policy is implemented by the National Climate Change Adaptation Strategy 2025, jointly issued by the MEE and 17 other agencies. This strategy serves as the national roadmap, providing a strong top-down policy framework that guides all adaptation work.
  - Localized Pilot Cities and Implementation Approach: The core operational unit is the Climate-Adapted City Pilot Program for 39 cities, established in 2023 to explore models and pathways for localized adaptation across diverse climate risks.
- **Presenters & Facilitators**
  - Dr. Juyoun Kang, Senior Researcher; and
  - Dr. Taehyoung Kim, Senior Researcher from Korea Adaptation Center for Climate Change (KACCC)
  - Dr. Jiyeon Song, Research Fellow of Division for Environmental Planning from KEI
  - Xu Cheng, Director from Environmental Development Center, MEE of China
- **Photos**



October 15 (Wed)

10:00-11:30

**Suwon Special City's Sustainability**

- **Venue:** Suwon Hwaseong Museum
- **Features**
  - ▣ Suwon Special City adopted Suwon 2030 SDGs Framework with the vision "A City Where Humans and the Environment Coexist Sustainably". It is utilized by multi-sectoral governance involving the City Government, the Suwon Council for Sustainable Development (Suwon CSD), the sustainable development committee, business sector, and academia for each goal
- **Key Topics**
  - ▣ Suwon 2030 SDGs Framework Operational Principles
    - ◆ Bottom up: Citizen-led monitoring of 57 sub goals, indicator values, and 10 policy implementation tasks
    - ◆ Build up: Formal administrative feedback and governance mechanisms to check implementation tasks and refine indicators
    - ◆ Spread out: Active promotion of sustainable development and education for capacity building
  - ▣ Successful Citizen-Driven Case Studies
    - ◆ Shared Refrigerator Program: This community model, run by 120 volunteers, operates 40 refrigerators to reduce food waste and extend benefits to vulnerable populations.
- **Presenters & Facilitators**
  - ▣ Presenter: **Sangmyeong Lee**, Officer from Suwon CSD
  - ▣ Mr. Seongi Kim, Team Manager; and
  - ▣ Ms. Yunju Jeong, Officer from Climate Energy Division in Suwon Special City
- **Photos**



13:30-15:30

## Haenggung-dong Eco Mobility Village

- **Venue:** Haenggung-dong Eco Mobility Village
- **Features**
  - Haenggung-dong Eco Mobility Village was established during the 2013 Eco Mobility World Festival, a car-free and eco-friendly transportation area, created by the city of Suwon, which was co-hosted by Suwon City, ICLEI, and UN Habitat.
- **Key Topics**
  - Ms. Yeonhee Park explained the significance and impact of the 2013 Eco Mobility World Festival and initiative. She guided the comprehensive village where the movements was implemented
  - Car-Free Zone: During the festival, cars were restricted, and only walking and eco-friendly transport modes were allowed.
  - Eco-Friendly Transport Infrastructure: Bicycle rental stations, electric scooters and kick boards, and shared electric vehicle charging stations
  - Community-Driven Projects: Residents actively participated in the planning process and continue to promote a culture of eco-mobility.
- **Presenters & Facilitators**
  - Presenter: **Ms. Yeonhee Park**, Regional Director of the ICLEI Korea
- **Photos**



## October 16 (Thu)

10:00-12:00

**Nowon EZ Center**

- **Venue:** Nowon EZ Center
- **Features**
  - ▣ Nowon EZ Center is an education center for promoting Nowon Energy Zero (EZ) Housing Project, initiated by Nowon District to reduce reliance on fossil fuels and respond to the urgency of climate change.
  - ▣ Nowon EZ house is the very first domestic zero energy housing complex which is invested by the Ministry of Land, Infrastructure, and Transport (MOLIT). After completion in 2017, it received the excellent level of green building certification and Germany Passive House certification in August 2018
- **Key Topics**
  - ▣ Nowon EZ House is designed to achieve Net Zero Primary Energy. Compared to standard housing under the 2009 Housing Act, it achieves a 61% energy reduction through passive design elements and an additional 13% reduction via high-efficiency equipment.
  - ▣ It combined two core approaches, passive house technologies and active house technologies. In terms of Passive House Technologies, it focused on minimizing energy loss through Heat Recovery Ventilation Systems, Tilt & Turn Windows, and high insulation doors. To produce energy by itself, Active House Technologies were applied as Geothermal Heat Pump System and Solar Panels.
- **Q&A**
  - ▣ Energy Cost Management: While individual household power usage can be higher than average due to lifestyle factors, the primary goal is net-zero efficiency. The passive design significantly lowers overall consumption, and solar energy generation covers electricity costs for common areas, offsetting maintenance expenses.
  - ▣ Eligibility to Residence: Units are offered to socially disadvantaged groups and community activists. Residency is allowed for up to 8 years. A current challenge is the unit vacancy rate, attributed to feedback regarding the relatively small size of the living spaces.
  - ▣ National Standard Application: Korea has mandated Zero Energy Building (ZEB) certification for new public buildings, progressively expanding to private sectors. Government subsidies are available for remodeling projects that meet ZEB standards, promoting nationwide adoption.
- **Presenters & Facilitators**
  - ▣ Presenter: **Ms. Soyoung Jang** from Nowon Environment Foundation



## ■ Photos

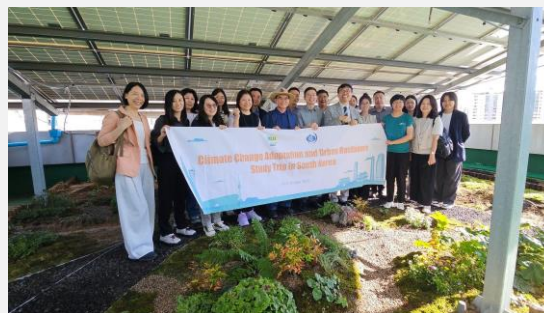


13:40-15:30

### Gongneung Youth Cultural Information Center

- **Venue:** Gongneung Youth Cultural Information Center
- **Features**
  - The Gongneung Youth Cultural Information Center is a public youth facility and library established by Nowon-gu District in Seoul. It supports youth-led projects and club activities.
  - The Green Roof Initiative has been implemented by installing solar panels and planting moss underneath them. This project was financially supported through the Citizens' Committee for Green Seoul highlighting successful citizen engagement in initiative. The rooftop integrates Solar Panels for electricity generation with the planting of moss in the shaded areas directly beneath the panels.
- **Key Topics**
  - The moss planted in the shaded areas at rooftop acts as a highly effective natural carbon sink, absorbing significant amounts of carbon dioxide through photosynthesis.
  - The combination of Solar Panels and Moss mitigates Urban Heat Island phenomenon, contributing to cooling the building and surroundings. Additionally, it helps capture and filter atmospheric particulate matter.
- **Q&A**
  - **Governance & Funding:** The center is fully funded by Nowon District Office. To ensure accountability and quality, the management team must submit an operational proposal review and renewal every three years.

- ❑ Regional Infrastructure: The Nowon District operates approximately five similar youth centers to emphasise a decentralised approach to public youth.
- **Presenters & Facilitators**
  - ❑ Presenter: **Mr. Seunghun Lee**, Director from Gongneung Youth Cultural Information Center; and
  - ❑ Mr. Eunsu Lee, Executive Director from Nowon Urban Farming Network
  - ❑ Mr. Seunghan Lee, Officer from Climate and Environmental Policy Division in SMG
- **Photos**



16:30-17:30

### Lotte World Tower

- **Venue:** Lotte World Tower
- **Features**
  - ❑ Lotte World Tower, one of the highest buildings in Seoul, is a LEED-certified green building that showcases energy-efficient management in a major urban landmark. It has served as an example of high efficiency energy systems to significantly reduce carbon footprint in urban energy resilience.
- **Key Topics**
  - ❑ The tower operates its own Energy Center, generating power through geothermal and hydrothermal systems, as well as on-site solar and wind facilities, ensuring a stable and efficient energy supply throughout the complex.
- **Photos**



October 17 (Fri)

10:00-11:00

### Cheonggyecheon Walking Tour

- **Venue:** Along the Cheonggyecheon Stream
- **Features**
  - The Cheonggyecheon Stream is Seoul's signature urban regeneration project, transforming a former elevated highway into a naturalized waterway. It is recognized globally as a symbol of sustainable urban development. The project successfully returned a vital waterway to the city center, replacing the concrete structure that had covered the stream.
  - The revitalized stream significantly enhances urban biodiversity, improves air quality, and maintains consistent water levels and cleanliness through sophisticated circulation and filtration systems.
- **Key Topics**
  - Guided tours and informational plaques along the pathway provide insights into sustainable urban design, water management, and the history of the restoration process.
- **Presenters & Facilitators**
  - Presenter: **Ms. Hyang Park**, Tour Guide from Seoul Tourism Organization
- **Photos**





## Evaluation Survey Result

### 1. Introduction

This report summarizes the findings from the post-event survey conducted among participants of the study trip including feedback gathered during the wrap-up session before the final day. The survey aimed to assess participant satisfaction, identify the most valuable learning components and gather insights to improve future programs.

The questionnaire was administered in Chinese to ensure clarity and comprehension, with English translations provided for reference. A total of 12 participants responded to the survey, yielding a response rate of 100%.

### 2. Key Findings

- **Program satisfaction:** Participants expressed a high level of satisfaction with the overall program, 12 of 10 participants (83%) rated the program as “very satisfied”. A key element of this satisfaction was the exposure to South Korea’s highly effective Public-Private Partnership (PPP) and civic cooperation models in environmental governance.
- **Most Valuable Insights:** The program’s value lay in a combination of systemic policy, civic engagement, and execution excellence.
  - **Legal & Policy Framework:** The significance of South Korea’s climate adaptation policy and its legal framework, such as the Framework Act on Low Carbon, Green Growth, which reinforces systemic action.
  - **Civic Engagement:** The citizen-led environmental governance observed at sites like the Citizens’ Committee for Green Seoul and the Gongneung Youth Cultural Information Center.
  - **Project Execution & Storytelling:** Korean NGOs’ professionalism and ability to effectively communicate the purpose and outcomes of their projects left a strong impression on participants.
- **Suggestions for Future Programs:** The primary suggestions focused on increasing depth and context of the program. Participants expressed a desire for more background information on South Korea’s overall systemic context and dedicated time for in-depth, structured discussions on specific topics. They also suggest increased opportunities for formal exchanges and dialogue with government departments.

### 3. Detailed Analysis

- **Satisfaction Analysis:** The survey results showed that participants were highly satisfied with all aspects of the program including its organization, content, and logistics.

- **Topic Specific Analysis:** Participants expressed high interest in civic engagement in environmental governance in South Korea. From the Citizens' Committee for Green Seoul to the Gongneung Youth Cultural Information Center. Also in the Suwon Special City visit and Nowon EZ Center.
- **Recommendations for Future Programs**
  - **Contextual Deep Dive:** Introduce a preparatory or integrated session focusing on the foundational governmental structure, economic landscape, and role of civil society in South Korea. This will better frame the understanding of environmental policy decisions.
  - **Enhanced Government Exchange:** Increase opportunities for direct, formal dialogues with government departments to deepen the understanding of policy formulation and regulatory challenges.
  - **Structured Discussion Time:** Dedicate 1-2 time slots during the trip for in-depth, facilitated discussions on specific themes or comparative analysis of cases to allow participants to process and integrate their learning.
  - **Internal Networking:** Implement brief internal team introduction sessions before institutional visits to foster better networking and rapport among participants.

#### **4. Conclusion**

The study trip was highly effective, successfully achieving high participation satisfaction and delivering a rich understanding of climate change adaptation and urban resilience in South Korea. It was particularly successful in raising awareness of the importance of civic engagement in environmental governance. Future programs should actively incorporate participant feedback to offer more in-depth and diverse topics.

#### **Key points**

- Participants were highly satisfied with the program.
- The most valued topics were citizen engagement in environmental governance
- Participants suggested more opportunities for in-depth discussions enhanced government exchange.



## Communications

## 1. Communications Overview

The communications strategy was executed to maximize professional engagement and documentation, ensuring the project's outputs reach key stakeholders in East Asia and the global urban climate community.

## 2. Knowledge Products and Articles

1) Promotional article (Pre-event)

- [illegible]

## 2) Post-Event Project Article

- English: [Enhancing Urban Climate Resilience through Local Exchange and Mutual Learning](https://eastasia.iclei.org/enhancing-urban-climate-resilience-through-local-exchange-and-mutual-learning/) ([eastasia.iclei.org/enhancing-urban-climate-resilience-through-local-exchange-and-mutual-learning/](https://eastasia.iclei.org/enhancing-urban-climate-resilience-through-local-exchange-and-mutual-learning/))
- Korean: [지역 교류와 상호 학습을 통한 도시 기후회복력 강화: 2025 중국 대표단 한국 연수 성료 – ICLEI East Asia](https://eastasia.iclei.org/ko/지역-교류와-상호-학습을-통한-도시-기후회복력-강화-2025-중국-대표단-한국-연수-성료-ICLEI-East-Asia) (<https://eastasia.iclei.org/ko/지역-교류와-상호-학습을-통한-도시-기후회복력-강화-20/>)

### 3. Social Media Outreach

- LinkedIn Posts (English)
  - Day 1: [www.linkedin.com/feed/update/urn:li:activity:7383457244685840384](https://www.linkedin.com/feed/update/urn:li:activity:7383457244685840384)
  - Day 2: [www.linkedin.com/feed/update/urn:li:activity:7383822765424005120](https://www.linkedin.com/feed/update/urn:li:activity:7383822765424005120)
  - Day 3: [www.linkedin.com/feed/update/urn:li:activity:7384150774668472320](https://www.linkedin.com/feed/update/urn:li:activity:7384150774668472320)
  - Day 4: [www.linkedin.com/feed/update/urn:li:activity:7384817959006978048](https://www.linkedin.com/feed/update/urn:li:activity:7384817959006978048)
  - Day 5: [www.linkedin.com/feed/update/urn:li:activity:7386636901325234176](https://www.linkedin.com/feed/update/urn:li:activity:7386636901325234176)
- Facebook (English)
  - Day 1: [www.facebook.com/share/p/16VLc6F2fV/](https://www.facebook.com/share/p/16VLc6F2fV/)
  - Day 2: [www.facebook.com/share/p/1Brp2oDEsC/](https://www.facebook.com/share/p/1Brp2oDEsC/)
  - Day 3: [www.facebook.com/share/p/19wJx5YniP/](https://www.facebook.com/share/p/19wJx5YniP/)
  - Day 4: [www.facebook.com/share/p/14MNefDeah6/](https://www.facebook.com/share/p/14MNefDeah6/)
  - Day 5: [www.facebook.com/share/p/17vEEKsmvf/](https://www.facebook.com/share/p/17vEEKsmvf/)
- X
  - Day 1: [x.com/ICLEIEAS/status/1977689595090538887](https://x.com/ICLEIEAS/status/1977689595090538887)

- Day 2: [x.com/ICLEIEAS/status/1978051707612578134](https://x.com/ICLEIEAS/status/1978051707612578134)
- Day 3: [x.com/ICLEIEAS/status/1978378468648731001](https://x.com/ICLEIEAS/status/1978378468648731001)
- Day 4: [x.com/ICLEIEAS/status/1979050694628745614](https://x.com/ICLEIEAS/status/1979050694628745614)
- Day 5: [x.com/ICLEIEAS/status/1980866007779668443](https://x.com/ICLEIEAS/status/1980866007779668443)
- BlueSky
  - Day 1: [bsky.app/profile/icleieastasia.bsky.social/post/3m332j3euw225](https://bsky.app/profile/icleieastasia.bsky.social/post/3m332j3euw225)
  - Day 2: [bsky.app/profile/icleieastasia.bsky.social/post/3m35kye36rk2t](https://bsky.app/profile/icleieastasia.bsky.social/post/3m35kye36rk2t)
  - Day 3: [bsky.app/profile/icleieastasia.bsky.social/post/3m37tlhjy5k2t](https://bsky.app/profile/icleieastasia.bsky.social/post/3m37tlhjy5k2t)
  - Day 4: [bsky.app/profile/icleieastasia.bsky.social/post/3m3eiss5ud22t](https://bsky.app/profile/icleieastasia.bsky.social/post/3m3eiss5ud22t)
  - Day 5: [bsky.app/profile/icleieastasia.bsky.social/post/3m3r3spyfls2v](https://bsky.app/profile/icleieastasia.bsky.social/post/3m3r3spyfls2v)
- WeChat (Chinese)
  - [mp.weixin.qq.com/s/F-LS3nIkBrUAiVgWIN3eqQ](https://mp.weixin.qq.com/s/F-LS3nIkBrUAiVgWIN3eqQ)

#### 4. Other materials

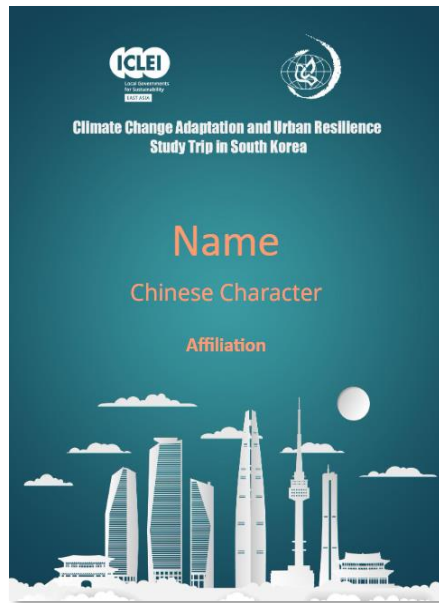
##### 1) Welcome Page



##### 2) Banner



## 3) Nametag

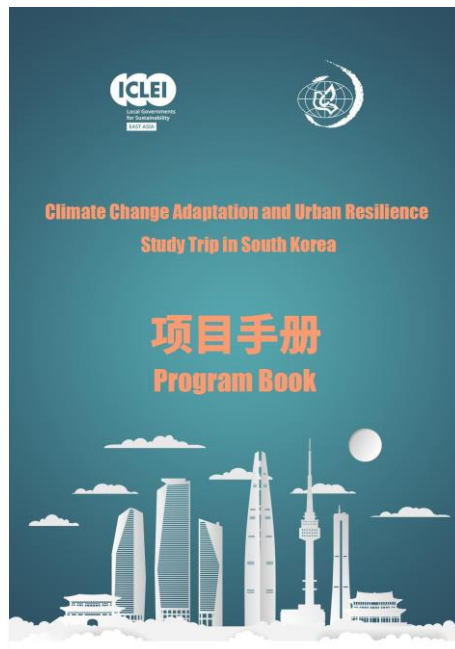


Front page

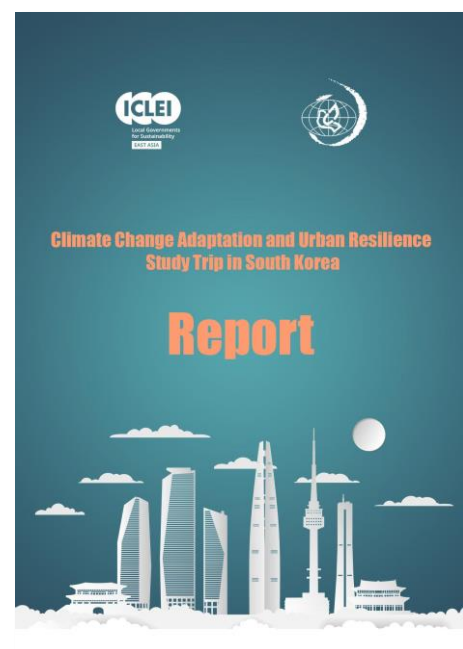
Climate Change Adaptation and Urban Resilience Study Trip in South Korea				
10.13	10:00 - 12:00	抵达	首尔仁川机场	
	15:20 - 16:30	欢迎仪式	首尔全球中心4楼会议室	
10.14	10:00 - 12:00	座谈	首尔市绿色首尔市市民委员	
	14:00 - 16:30	座谈	首尔龙山站会议室	
10.15	10:00 - 11:30	座谈	水原华城博物馆	
	14:20 - 16:30	考察	水原市行宫洞生态交通村	
10.16	10:00 - 11:30	考察	芦原区零碳建筑中心	
	14:00 - 16:00	考察	孔陵青少年文化信息中心 首尔乐天塔	
10.17	10:00 - 11:00	考察	清溪川	
	11:30 - 12:30	活动总结	首尔全球中心会议室	

Back page

## 4) Program book and Report



Program Book



Report

## References

### Publications and Reports

- Citizen's Committee for Green Seoul. Status of Green Seoul. (in Korean). Available at: <https://ecoarchive.org/items/show/83863>
- ICELI. 2013. EcoMobility World Festival 2013. Available at: <https://sustainablemobility.iclei.org/wpdm-package/ecomobility-world-festival-2013/?wpdmdl=2849>
- SMG. 2021. Cheonggye Stream. Available at: <https://english.seoul.go.kr/cheonggyecheon-stream-3/>
- SMG. 2025. Enforcement Rules of the Ordinance on the Establishment and Operation of the Green Seoul Citizen Committee. Seoul Metropolitan City Regulation No. 4677, January 20, 2025. (in Korean). Available at <https://www.law.go.kr/자치법규/서울특별시녹색서울시민위원회설치및운영조례시행규칙>
- Suwon City and Suwon CSD. 2022. 2022 Suwon Sustainable Development Review. Suwon City. Available at: <https://www.iges.or.jp/sites/default/files/inline-files/2022%20Suwon%20SDG%20Report.pdf>

### Websites

- Climate and Environmental Policy Division Page of SMG Website. Available at: <https://english.seoul.go.kr/policy/environment-energy/seouls-environment/>
- Citizen's Committee for Green Seoul website (in Korean). Available at: <https://cafe.naver.com/ecoseoulpeople>
- Environmental Policy Division of Suwon Special City Government. Available at: <https://www.suwon.go.kr/index.do>
- Gongneung Youth Cultural Information Center (in Korean). Available at: <http://gycenter.or.kr/>
- ICLEI East Asia website. Available at: <https://eastasia.iclei.org/>
- ICLEI Korea website (in Korean). Available from <https://www.icleikorea.org/>
- Nowon Environment Foundation. Available at: <https://nwgreen.or.kr/EN/>
- Nowon EZ Center website (in Korean). Available at: <http://www.ezcenter.or.kr/>
- Seoul Tourism Organization website. Available at: <https://www.sto.or.kr/english/index>
- Suwon CSD website (in Korean). Available at: <https://www.suwonagenda21.or.kr/index.php>



**Title:**

Report on the 2025 Climate Change Adaptation and Urban Resilience Study Trip in South Korea.

**Written by:**

Ms. Yeajin Han, Program Consultant &  
Ms. Yeonah Ku, Program Officer

**Designed by:**

Ms. Xiaoqian Zhou, Communication and Knowledge Management Officer

**Project Team:**

Ms. Ge Liu, Strategy Manager (Supervisor)  
Ms. Yeonah Ku, Program Officer (Coordinator)  
Ms. Xiaoqian Zhou, Communication and Knowledge Management Officer  
Ms. Yeajin Han, Program Consultant  
Ms. Siqiao Yuan, Program Manager  
Ms. Yuan Yuan, Program Officer

**Published by:**

ICLEI East Asia Secretariat

**Acknowledgement:**

This project was supported by Partnerships for Community Development (PCD).

**Publication Date:**

January 2026

**Copyright © 2025 ICLEI East Asia Secretariat**

All rights reserved. No part of this publication may be reproduced, distributed, or transmitted in any form or by any means without prior written permission from ICLEI East Asia Secretariat.

For inquiries, please contact: [iclei-eastasia@iclei.org](mailto:iclei-eastasia@iclei.org)



## ICLEI-Local Governments for Sustainability

[easia.iclei.org](http://easia.iclei.org)

### East Asia Secretariat

14/F, Seoul Global Center Building, 38 Jongno,  
Jongno-gu, Seoul 03188, South Korea

Tel. +82-2-3789-0498

Fax +82-2-3789-0497

### Beijing Office

Room 810, Yinke Building, No. 38 Haidian Street,  
Haidian District, Beijing, China, 100080

Tel. +86 010-8429-6681



ICLEI website



ICLEI WeChat

